

300 Series

300i

315p

325a

350r



THE 300 SERIES
The Next Generation Is Now.



LUXURY DEFINED



POWER YOU CAN TOUCH



The all-new 300 Series from ORIGIN is the manifestation of a feeling. It is the thrill of T4 engines pushing out of an atmosphere. It is exhilaration as you weave through an asteroid field. It is when flight controls become more than mechanisms, they become a part of you. We at ORIGIN design for you, not you and your ship.

ORIGIN's 300 Series is the ultimate fusion of elegance and power. Every component, every part is individually calibrated, so no matter which model and options you choose, your ship will stay in perfect harmony as the ultimate in astroengineering.



UNPARALLELLED EXCELLENCE

BEAUTY IN SPACE



In 2889, the Lang Brothers were tired of the trend toward utilitarianism in the ships of their time. They wanted to bring aesthetics back to space design. They retreated to their workshop to start building what would ultimately become the prototype for the X3. The success of that iconic ship became the wellspring of ORIGIN Jumpworks' lines of personal craft.

The Langs refused to rest on the mounting accolades; instead they continued to push their engineers to find the perfect equilibrium between beauty and function. Over the next thirty years, the Langs and their team released a series of ships that established ORIGIN as one of the most respected names in astroengineering.

With the 300 Series, the engineers and designers at ORIGIN have continued that proud tradition of aesthetics and utility originally conceived over fifty years ago in that workshop.

The Langs believed that there was a place for beauty in space.

The 300 Series continues to prove them right.



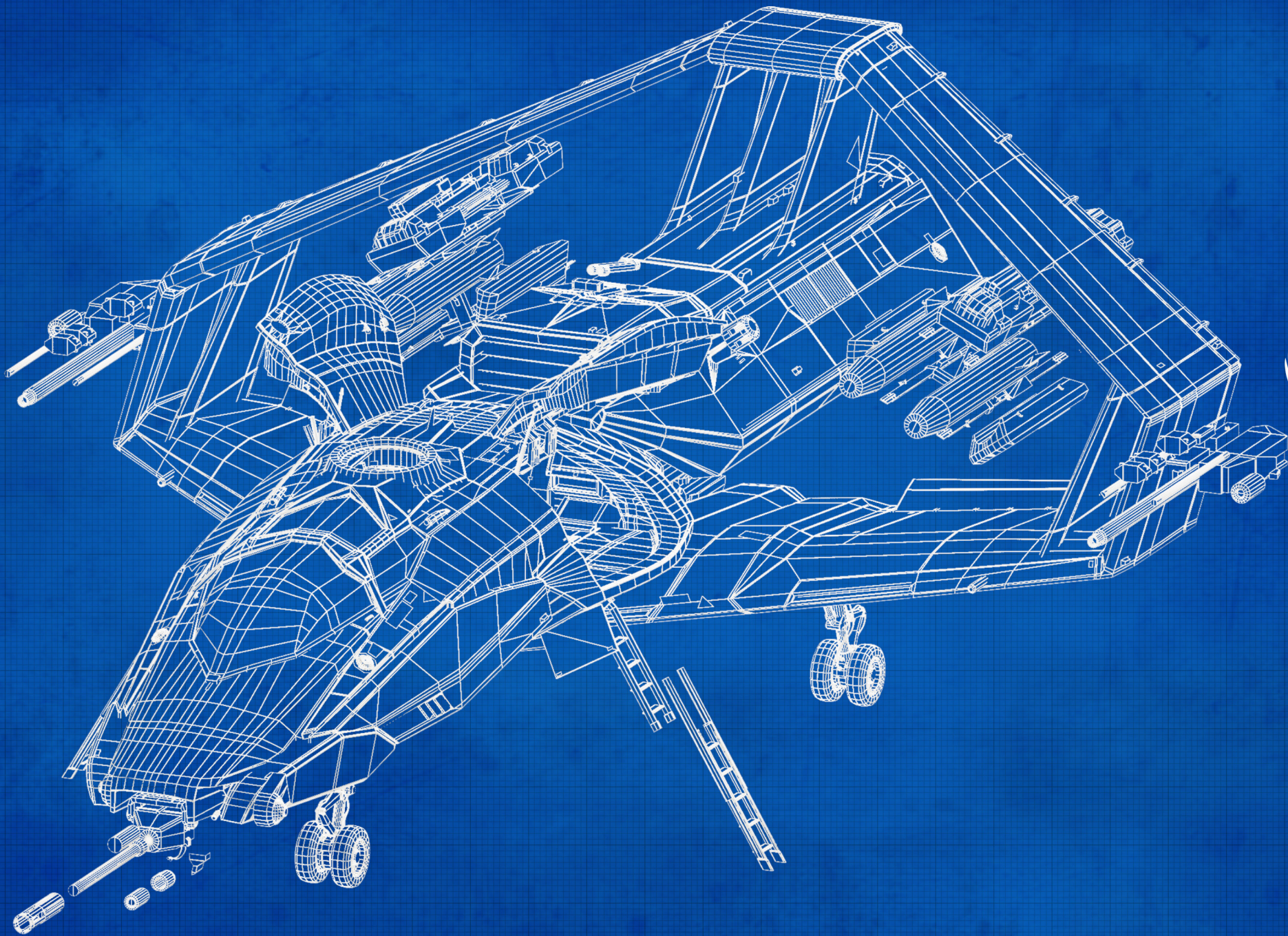
PERFECTION

THE HEAVENS AWAIT



DYNAMIC

**WHERE ELEGANCE
AND POWER MEET**



BUILDER
ORIGIN
Jump Works

NO.	REVISIONS	DATE BY
V1	Hard Point Config	2943-05-14 RA
V8	Final Hard Point	2943-05-19 RA

ORIGIN
JUMP WORKS
Cloud Imperium Games Corporation
<http://www.robertsspaceindustries.com>

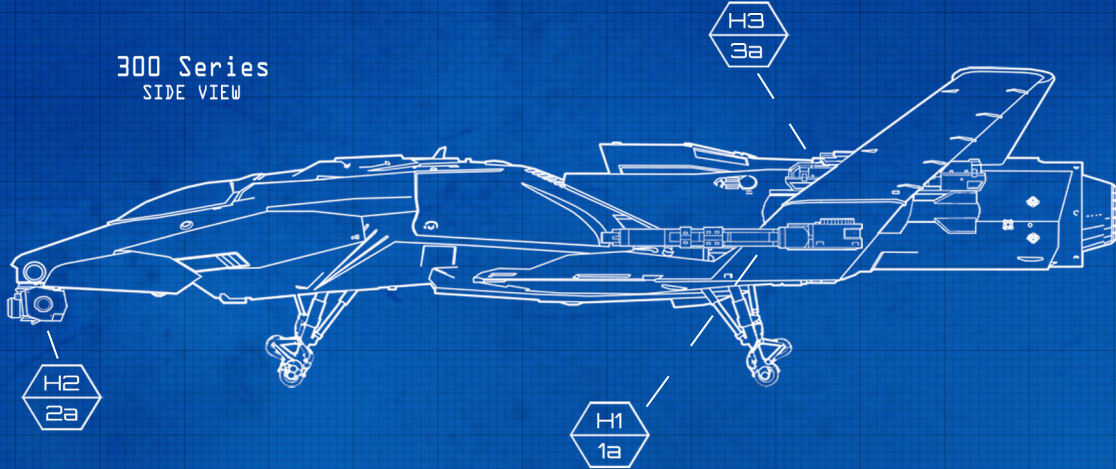
HARDPOINTS
300 Series

DRAWN BY: RA
CHECKED BY: DL
NB Logic

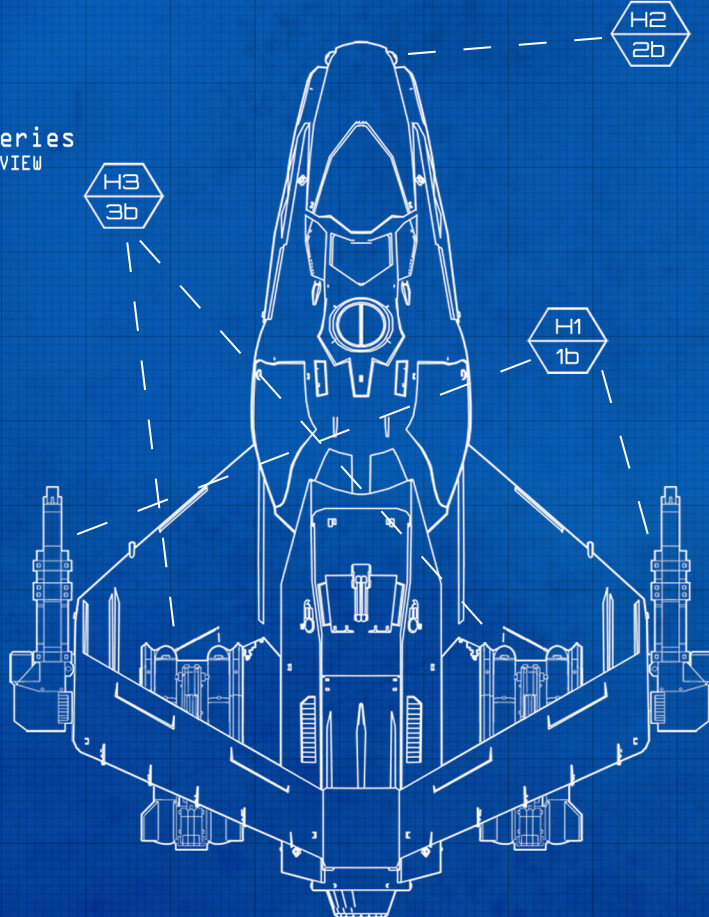
DISCLAIMER: These are our current specifications on paper. Some of this is likely to change during the 3D design and game balancing process over the next 24 months.

Sheet
EXP-1

300 Series
SIDE VIEW



300 Series
TOP VIEW

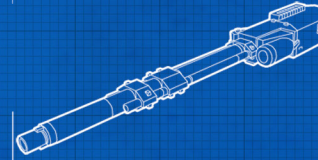


KEY	CLASS	HARDPOINTS
H1	2 X CLASS 1	EQUIPPED 2 X A&R OMNISKY VI LASER CANNON
H2	1 X CLASS 2	EQUIPPED 1 X TRACTOR BEAM
H3	2 X CLASS 3	EQUIPPED 2 X TALON STALKER IR TWIN

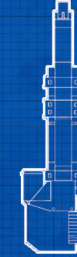
NOTES:

- H1. A&R Omnisky VI Laser Cannon is standard on all 300 Series models other than the 350r. The 350r standard weapon is a lighter Omnisky III.
- H2. Tractor beam is standard on 31Sp, optional on other 300 Series models.
- Klaus G. Werner Mass Driver Cannon is standard on 325a, optional on other 300 Series models.
- H3. Talon Stalker is standard on 325a, optional on other 300 Series models.

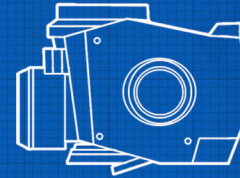
1a
SIDE VIEW



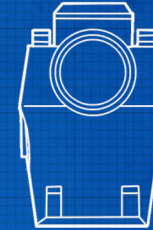
1b
TOP VIEW



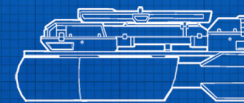
2a
SIDE VIEW



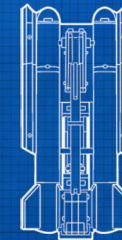
2b
TOP VIEW



3a
SIDE VIEW



3b
TOP VIEW



BUILDER: ORIGIN
JUMPWORKS

NO.	REVISIONS	DATE BY	2543-05-14	RA	2543-05-19	RR
V1			Hard Point Config			
V8			Final Hard Point			

ORIGIN
JUMPWORKS
Cloud Imperium Games Corporation
<http://www.robertsspaceindustries.com>

HARDPOINTS
300 Series

DRAWN BY: RA
CHECKED BY: DL
NB Logic

DISCLAIMER: These are our current specifications on paper. Some of this is likely to change during the 3D design and game balancing process over the next 24 months.

Sheet
HP-1



FLY HIGHER

**THE PURSUIT OF
HAPPINESS IS
NEVER-ENDING.**

Elegance and efficiency,
sophistication and swagger:
the ORIGIN 300 series gives pilots and
passengers a sense of purpose on the
lanes – and a reason to keep moving.

DESIGN IS LAW.



Save the complicated maneuvers for outside the ship: every part of a 300 Series spacecraft is exactly where you expect it to be. At ORIGIN, we pride ourselves on building to the pilot instead of the spacecraft. Every component of an ORIGIN spacecraft, from the laser bypass core connector to the cockpit auto-latch vacuum seal system, has its

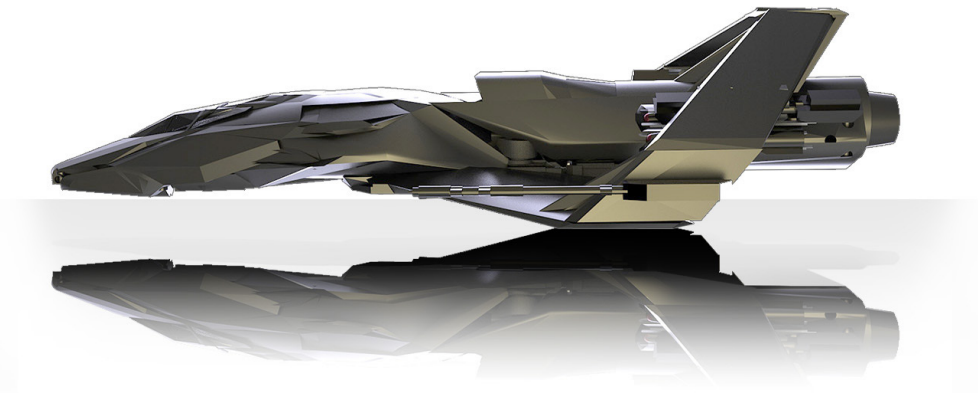
own storied design team and has been rigorously examined for ergonomic superiority and stress-tested to within one-micron tolerances. We're dedicated to making sure your spacecraft feels like an extension of your body; grab a 300 Series flight yoke to find out what you've been missing.

LOOKS THAT CAN KILL.



You're traveling at thousands of kilometers per hour, blasting asteroids with your laser cannons and dodging stellar debris. So why aren't you having fun? Space travel doesn't need to be a chore and you don't need to do it in another matte grey box. Choose an ORIGIN 300 Series spacecraft and you'll look forward to entering orbit again.

The 300 Series are ships that fight as well as they look, with powerful laser cannons standard and missile launcher slots optional on every model. All that, plus sleek, beautiful lines painstakingly engineered by two hundred years of space travel expertise ... it's no wonder they call it the ORIGIN look.



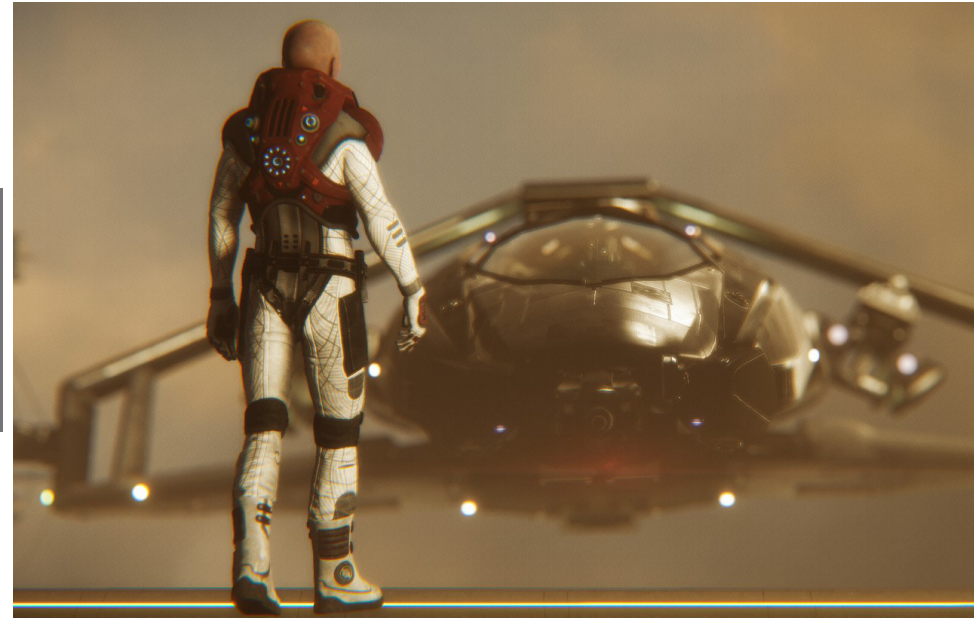
YOUR SHIP IS YOUR CHARACTER.



Why wouldn't you want the best? Here at ORIGIN, we understand that everyone is different so our engineers aimed to provide a level of customization unparalleled in our competitors so the 300 Series offers a flexible design architecture allowing you to tailor the ship to

suit your needs. You can rest assured that any modifications (see authorized dealer for acceptable parts) will work natively with your 300 model or variant without sacrificing the overall quality and features that make your 300 an ORIGIN spacecraft.

WE HAVE YOUR BACK.



Peace of mind doesn't have to mean losing out on a piece of the action. A professional pilot can't rely on a repair service contract when he's ten jumps from home. That's why every ORIGIN 300 Series spacecraft uses vacuum-tested museum-grade parts mated with industry-defining standard attach

points. Every component on a 300 is accessible in the field by the pilot, so taking damage doesn't have to mean an immediate trip home. ORIGIN relies on the strictest standards to certify authorized repair centers, so you will always have a safe port.



The 300 Series' state-of-the-art glass cockpit allows for an unobstructed 360 degree forward view for maximum situational awareness. Diamond-cut starprism™ material allows for finer visibility than any spacecraft in its class. Custom-designed HUDs provide a constant stream of data without obscuring the view!



ADMIRE THE VIEW





ROOM TO BREATHE



The 300 Series handles like a fighter without sacrificing the comforts of a larger ship. With ample berths for longer-duration spaceflight, the 300 Series' rear habitation compartment features all the necessities: eat, sleep and work in exquisite comfort.



Navigate the distant depths of space with the comfort and safety of the well-traveled spacelanes. Fly safe in the knowledge that you are protected by the safest and most well-constructed spacecraft hull in space. It's the ultimate freedom to explore!

A BOLD NEW HORIZON EVERYTHING, EVERYWHERE

Built-in touch panels allow the pilot complete access to all subsystems even when relaxing away from the cockpit. Whether you need to alter your avionics pattern or stream the latest stock reports, the 300 Series' software is always within reach.



300i



DISTINCT LUXURY.

The 300i touring model is the premiere spacecraft hull on the market today. A true jack-of-all-trades, the 300i is capable of making any role its own and doing so with the class and sophistication expected of an ORIGIN design. All models feature Gorgon Defender shields and A&R Omnisky VI cannon standard.



A&R Omnisky VI Laser Cannon.

The A&R Omnisky VI laser cannon comes standard on all ORIGIN 300 Series base models. ORIGIN has partnered with A&R as the exclusive laser supplier for the line because of their unequaled quality standard and dedication to customer satisfaction. With nanometer-thin lens tolerances and a titanium-beryllium recharge coil, the A&R Omnisky is a weapon par excellence.

Basics		300i
Length	meters	24
Crew (max)		1
Mass (empty)	kg	20,000
Focus		Touring

Structure Stats	
Upgrade Capacity	6
Cargo Capacity	tonnes 8
Engines	ACOM StarHeart III
Main Thrusters	Hammer Propulsion HE 5.3 (TR3)
Maneuvering Thrusters	12 x TR1
Shield	Gorgon Defender AllStop

Hardpoints	
2 x Class 1 (outer wings)	2 x A&R Omnisky VI laser cannon
1 x Class 2 (nose)	Nothing equipped
2 x Class 3 (inner wings)	Nothing equipped

315p



Basics		315p
Length	meters	24
Crew (max)		1
Mass (empty)	kg	20,000
Focus		Exploration

Structure Stats	
Upgrade Capacity	6
Cargo Capacity	tonnes 8
Engines	Tyler D-Tech Soniclite 600
Main Thrusters	Dragon Stellar STC Silver (TR4)
Maneuvering Thrusters	12 x TR1
Shield	Gorgon Defender AllStop

BEYOND DISCOVERY.

Exploration is man's highest calling. Prepare to chart distant horizons with man's most sophisticated piece of technology, the ORIGIN 315p. Featuring a more robust power plant and a custom scanning package, exclusively designed by Chimera Communications, the 315p is designed for the pilot who wants to go further, to see things that few have seen.



Dragon Stellar STC Silver.

Go farther, faster. The ORIGIN 315p pairs an elite-class Tyler D-Tech Soniclite 600 powerplant with a Dragon Stellar STC Silver thruster system capable of smooth maneuvering at long range. Only the 315p's advanced engine solution makes navigating the furthest reaches of unexplored space as simple as a ride around the Terra system.

Hardpoints	
2 x Class 1 (outer wings)	2 x A&R Omnisky VI laser cannon
1 x Class 2 (nose)	Tractor beam
2 x Class 3 (inner wings)	Nothing equipped

Tractor Beam.

You've charted the farthest jump points and penetrated the most distant nebulae. Now what? Bring a piece of your journeys home, with the Tractor Beam available standard on every ORIGIN 315p spacecraft. From digging up rare minerals in distant asteroid belts to unlocking deep space's darkest archaeological mysteries, the 315p's Tractor Beam is the tool for your lifestyle.



325a



Basics		325a
Length	meters	24
Crew (max)		1
Mass (empty)	kg	20,000
Focus		Interdiction

Structure Stats	
Upgrade Capacity	6
Cargo Capacity	tonnes 8
Engines	Wei-Tek LFT-2 Durability Plus
Main Thrusters	Hammer Propulsion HE 5.3 (TR3)
Maneuvering Thrusters	12 x TR1
Shield	Gorgon Defender ForceWall

UNEQUALLED STRENGTH.

It's a dangerous universe out there. Be the arbiter of your fate with the combat-enhanced ORIGIN 325a. Just because it's a rough galaxy doesn't mean you need to sacrifice your comfort: the 325a can come out on top in any dogfight. The 325a features an advanced weapon payload as well as a custom targeting system designed especially for the 325a by WillsOp.

Klaus & Werner Mass Driver Cannon.

For that extra punch, the ORIGIN 325a mounts a Klaus & Werner Mass Driver Cannon. The gold standard for mass driver cannon is hand-machined in the K&W factory and provides the stopping power you need, whether you're pursuing business interests or boring through isometal meteorites.



Talon Stalker IR Twin.

Get the drop on the competition with a pair of Talon Stalker Image-Recognition missiles. Featuring twin-mounted recessed fuselage bays, the missiles form an essential part of the ORIGIN 325a's complete weapons system and gives it the bleeding edge in an arena where force projection makes the difference between life and death.



Hardpoints	
2 x Class 1 (outer wings)	2 x A&R Omnisky VI laser cannon
1 x Class 2 (nose)	1 x Klaus & Werner Mass Driver Cannon
2 x Class 3 (inner wings)	2 x Talon Stalker IR twin

350r



Basics		350r
Length	meters	24
Crew (max)		1
Mass (empty)	kg	17,000
Focus		Racing

Structure Stats	
Upgrade Capacity	6
Cargo Capacity	tonnes 5
Engines	Gangleri BP 707 Standard
Main Thrusters	2x Hammer Propulsion HM 4.3 (TR3 x2)
Maneuvering Thrusters	12 x TR1
Shield	Gorgon Defender AllStop

Hardpoints	
2 x Class 1 (outer wings)	2 x A&R Omnisky III laser cannon
1 x Class 2 (nose)	Nothing equipped
2 x Class 3 (inner wings)	Nothing equipped

PURE SPEED.

Since the dawn of civilization, Humans have striven to build faster machines. Now, ORIGIN presents the culmination of that effort: the ORIGIN 350r. The combination of a Gangleri BP 707 Standard powerplant with a 300i fuselate re-engineered to accommodate twin Hammer Propulsion HM 4.3 thrusters makes the 350r the fastest personal craft you'll ever call your own.



Twin Hammer Propulsion HM 4.3.

Twice the thrust, unlimited potential. The ORIGIN 350r's fuselage has been specifically re-engineered to support twin Hammer Propulsion HM 4.3 thrusters. Combined with a performance-grade Gangleri BP 707 Standard powerplant, the 350r delivers the power you need and the velocity you crave.

A&R Omnisky III Laser Cannon.

An energy-efficient weapons solution, the A&R Omnisky III laser cannon allows the ORIGIN 350r to devote maximum power to thrusters without losing the ability to fight ... because being able to outrun anything in space doesn't mean you shouldn't be able to fight.



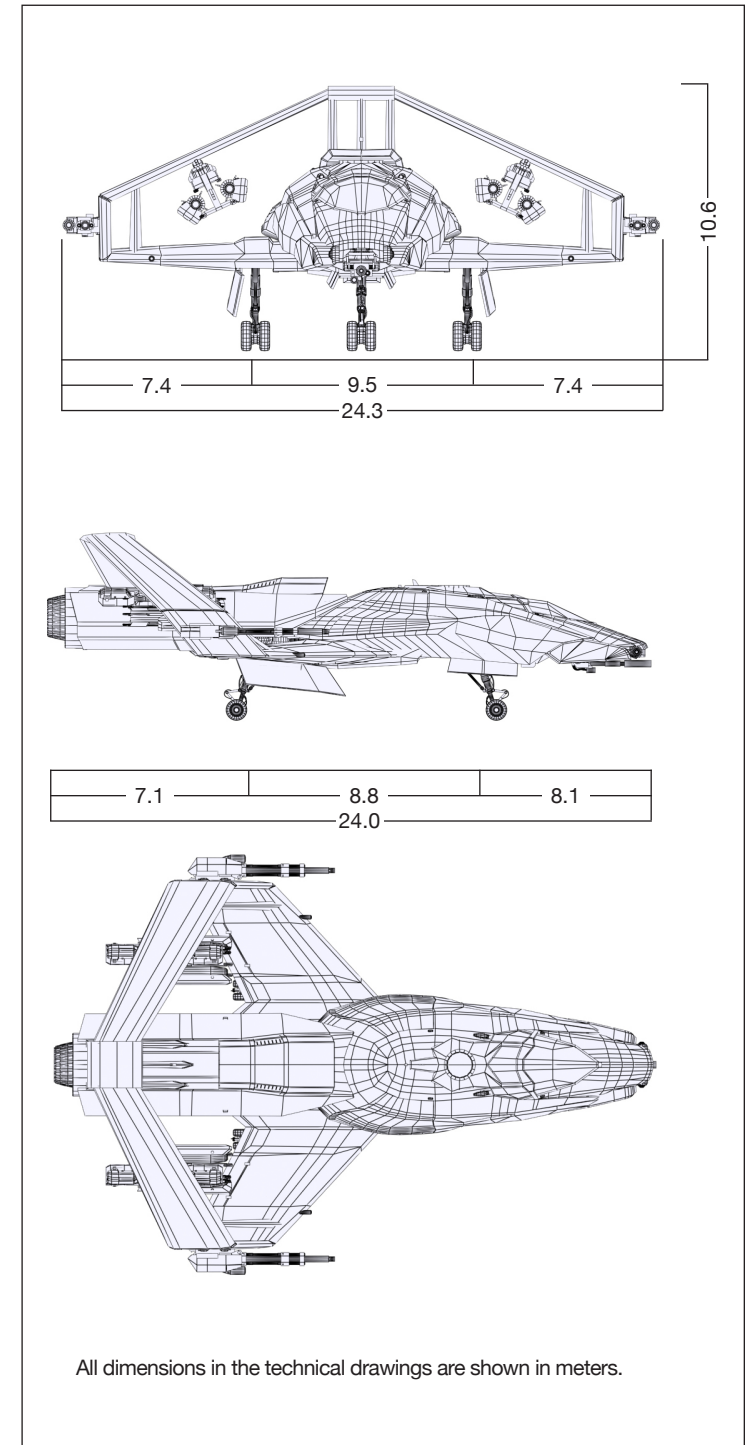
Technical Data

Basics		300i	315p	325a	350r
Length	meters	24	24	24	24
Crew (max)		1	1	1	1
Mass (empty)	kg	20,000	20,000	20,000	17,000
Focus		Touring	Exploration	Interdiction	Racing

Structure Stats					
Upgrade Capacity		6	6	6	6
Cargo Capacity	tonnes	8	8	8	5
Engines		ACOM StarHeart III	Tyler D-Tech Soniclite 600	Wei-Tek LFT-2 Durability Plus	Gangleri BP 707 Standard
Main Thrusters		Hammer Propulsion HE 5.3 (TR3)	Dragon Stellar STC Silver (TR4)	Hammer Propulsion HE 5.3 (TR3)	2x Hammer Propul- sion HM 4.3 (TR3 x2)
Maneuvering Thrusters		12 x TR1	12 x TR1	12 x TR1	12 x TR1
Shield		Gorgon Defender AllStop	Gorgon Defender AllStop	Gorgon Defender ForceWall	Gorgon Defender AllStop

Hardpoints				
2 x Class 1 (outer wings)	2 x A&R Omnisky VI laser cannon	2 x A&R Omnisky VI laser cannon	2 x A&R Omnisky VI laser cannon	2 x A&R Omnisky III laser cannon
1 x Class 2 (nose)	Nothing equipped	Tractor beam	1 x Klaus & Werner Mass Driver Cannon	Nothing equipped
2 x Class 3 (inner wings)	Nothing equipped	Nothing equipped	2 x Talon Stalker IR twin	Nothing equipped

DISCLAIMER: Holography and other imagery contained in this promotional material is based on the information available at the time of dispatch. ORIGIN reserves the right to alter, at any time and without notice, the colors, modules, hardpoints, loadouts, specifications and models of the spacecraft presented. Spacecraft designations are subject to change and while craft may be pictured in specific roles, ORIGIN makes no guarantee that a specific task has been tested. Except where specifically noted, spacecraft may be shown with optional upgrades. While ORIGIN strives to offer accurate information at all points in this brochure, it does not constitute a guarantee of accuracy. ORIGIN does not accept any liability for the accuracy of information in this publication or any damages resulting from its general misuse. This brochure does not supersede information available from your authorized ORIGIN dealer and should not be considered more accurate. Updates and clarifications can be obtained from an authorized ORIGIN dealership or by contacting ORIGIN corporate headquarters via dispatch.





Side Panels.

Reinforced armor plating that doesn't look and move like a box turtle? It's possible with the 300 Series spacecraft. Beautifully engineered hull plating featuring nano-polarized connection points keeps the crew compartment safe from any interstellar dangers.



Main Thruster.

What's the ability to outrun anything in space worth? The 300 Series is gone before you can lock your scanners. With a full-bore ventral thruster (twin version available on the 350r) that's as powerful as it looks, the 300 Series is a speed addict's dream.

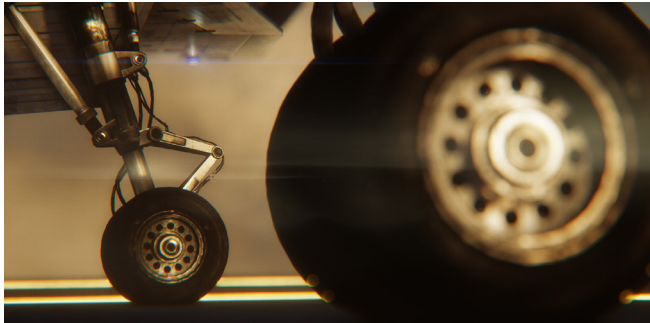


Landing Gear.

Fully-retractable segmented landing gear mean that the 300 Series is just as stable on the ground as she is in space. Recessed titanium struts allow for a minimal radar signature in flight and an extremely stable position on the ground.

Cockpit Panels.

The 300 Series features a fully functional tactile-response illuminated dashboard that enhanced situational awareness by up to 33% in tests. It's not just cutting edge, it's timeless style.



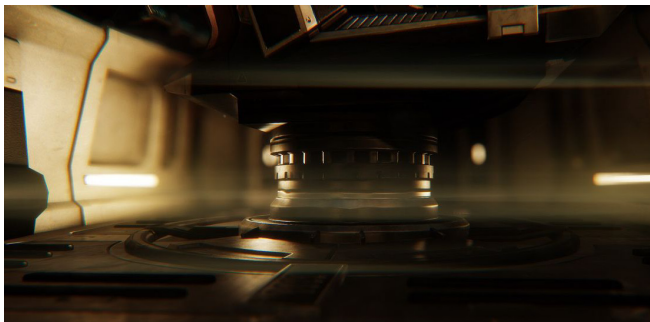
Every Flight Starts and Ends with the Wheels.

Featuring natural Terra-sourced macetree rubber and high-tensile titanium load struts, the 300 Series landing gear is in a class by itself. With technology capable of landing smoothly at the busiest starports or the roughest frontier spacestrips, you're in for the ride of your life.



Cockpit Exterior.

Maximum visibility without sacrificing safety. The 300 Series' revolutionary full-view cockpit seals perfectly regardless of installed shield technology, meaning it's just as safe to operate in a three-piece suit as it is a spacesuit.



Pilot Chair Base.

The new Atlas Pilot's Seat connects to the deck through ORIGIN's patented suspensor technology, capable of compensating for even the most turbulent atmosphere or environment.



Underbody Silhouette.

Nothing else in space looks like a 300 Series ship. The distinct silhouette and brushed metal hull stand out in all circumstances, inspiring awe in business partners and fear in opponents. A 300 isn't a starship, it's a message.

Outer Wing Lasers.

A&R Omnisky brand lasers are standard equipment on every 300 Series model. With precision engineered lenses and high impact target tracking technology pre-loadead, the A&R Omnisky is a cannon that stands apart.



Inner Wing Missiles.

Optional external missile mounts (standard on the 325a) allow the 300 Series to deploy tactical warheads without the reduction in stealth signature that impacts most ships in the class. Missile rack sensors retract during the firing sequence to minimize cross-signature at all times.



Maneuvering Thrusters.

The 300 Series TR1 maneuvering thrusters offer pinpoint precision, variable thrust capabilities (depending on availability) and Explorer Guild endorsed responsiveness ideal for navigating uncharted jump points.





Based on Terra in the heart of Human civilization, ORIGIN Jumpworks GmbH has been designing and manufacturing high performance spacecraft and components for over two centuries. From the unparalleled velocity of the M50 to the spacious luxury accommodations of the 890 JUMP, ORIGIN has engineered a solution for every lifestyle.

From high-tensile multimetal structural components rated for 150% survivability in the deadliest spatial environments to stylish interiors refined by Johann Hexlairre and the finest team of designers in the galaxy, ORIGIN spacecraft are more than the sum of their parts. All ORIGIN craft feature standard-defining upgrade mounts and technology access points. Only the highest

quality component options are standard or made available as options at ORIGIN showrooms across known space.

All ORIGIN models are manufactured in a closed-cycle; everything from starship wing spars to cup holders are designed and constructed by ORIGIN engineers at ORIGIN-owned factories. You fly the spacecraft we imagined, with absolutely no compromises.

Add to the equation unparalleled safety ratings and flight effectiveness scores and you know that choosing to pilot an ORIGIN spacecraft is putting your life in the best possible hands.

The models featured in this publication are approved for use in the UEE. Some items of equipment are available as extra-cost options only. Availability may vary from market to market due to local restrictions and regulations. For information on standard and optional equipment, please consult your local Origin Dealer.

All information in respect of construction, features, design, armaments, dimensions, weight, power output and running costs is correct at the time of going to print (06/21/43). Origin reserves the right to alter specifications without prior notice.

Colors may differ from those illustrated.

Errors and omissions excepted.

© ORIGIN JUMPWORKS GmbH, 2943

All text, images and other information in this publication are copyright

ORIGIN JUMPWORKS GmbH

No part of this publication may be reproduced or transmitted, in any form or by any means, without prior permission in writing from ORIGIN JUMPWORKS GmbH.

ORIGIN JUMPWORKS GmbH
Marketing Dept.
3245 N 467th Street
Prime, Terra

Valid from: 06/20 SET